

**My**

**ADULT**

**CF team**

You've probably had the same CF team for years, and know everyone pretty well. Moving to adult care, there will be lots of new faces and names to learn.

Use this template to fill in the details of your new CF team. This should help you remember who they are and what they'll be supporting you with and give you a chance to get to know them better!

Bear in mind that you might have more than one person supporting you with each area of your care.

Make sure you ask for permission to use a photo!

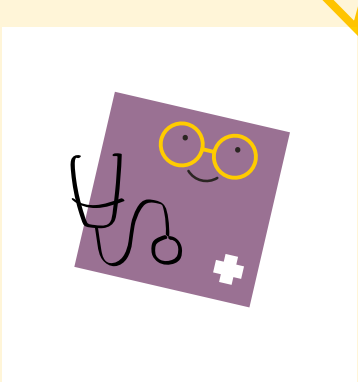
Name

Role

Contact details

Fun fact

Photo



I should get in touch with them if I have questions about

[cysticfibrosis.org.uk](http://cysticfibrosis.org.uk)

© Cystic Fibrosis Trust 2020. Registered as a charity in England and Wales (1079049) and in Scotland (SC040196). A company limited by guarantee, registered in England and Wales number 3880213. Registered office: Cystic Fibrosis Trust, 2nd Floor, One Aldgate, London EC3N 1RE

**Cystic  
Fibrosis Trust**

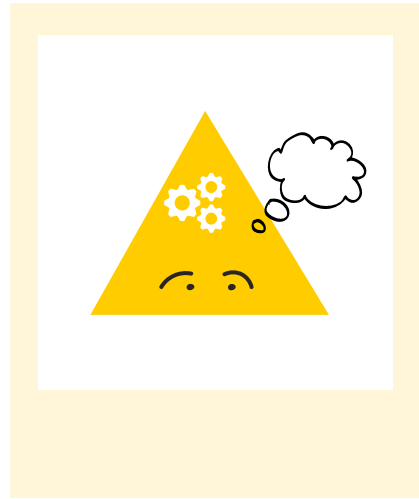
Name

Role

Contact details

Fun fact

Photo



I should get in touch with them if I have questions about



Name

Role

Contact details

Fun fact

Photo



I should get in touch with them if I have questions about

Print out or photocopy this page as many times as you need to fill in information about all of your CF team.